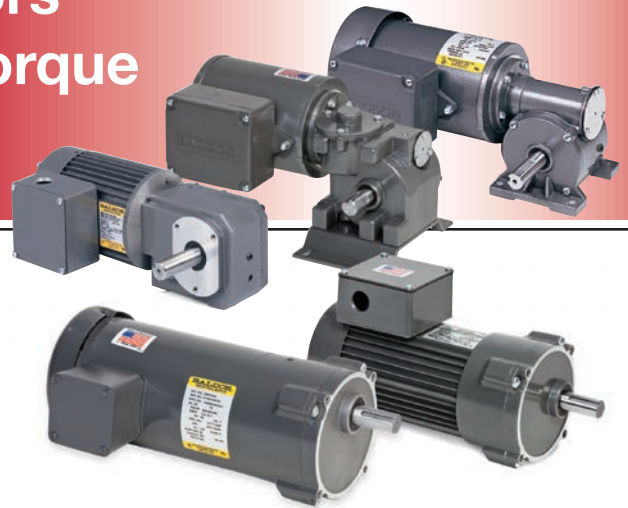


Inverter Duty Gearmotors

5 - 637 in-lbs. Output Torque

5.4 - 345 Output RPM



Applications:

Conveyors, material handling, packaging machinery, agricultural, medical and laboratory equipment, and other applications requiring adjustable speed.

Features:

- Optimal unit performance achieved by precision matched motor and gearhead combinations
- Industry standard foot prints
- Inverter Ready insulation system – meets NEMA MG 1 Part 31.4.4.2
- UL recognized and CSA certified
- High strength bronze gearing in right angle motors
- Induction hardened helical and spur gearing in parallel shaft motors
- Factory lubricated for life with synthetic lubricant
- Non-vented gear housings for flexible mounting and to prevent lubricant contamination
- Supplied with conduit box as standard
- Other ratios, voltages, surface finishes, mountings, conduit boxes, cords, brakes, and encoders are available as custom
- 35 district offices throughout the USA and Canada that can assist with any technical questions
- 33 stocking locations throughout the USA and Canada with 24 hour support

BALDOR®

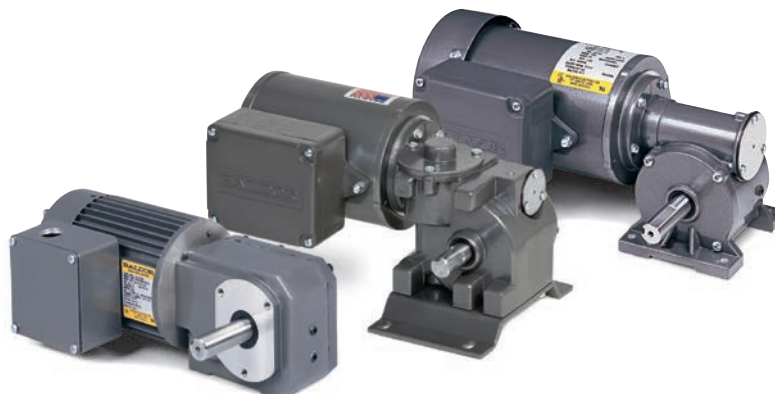
A MEMBER OF THE ABB GROUP

Right Angle

| Input Motor Hp | Output RPM 60 Hz | Gear Ratio | Speed Range (CT) | Max. Safe Torque In. Lbs. @ 60 Hz | Catalog Number (a) | List Price | Mult. Sym. | Ap'x Shpg. Wgt. | Motor Type & Gear Style | Voltage @ 60 Hz |
|------------------|------------------|------------|------------------|-----------------------------------|--------------------|------------|------------|-----------------|-------------------------|-----------------|
| FTA Style | | | | | | | | | | |
| 1/25 | 85 | 20:1 | 28 - 128 | 13 | IDGM2401 | 505 | E2 | 7 | 2416M-FTA | 230 |
| | 170 | 10:1 | 57 - 255 | 9 | IDGM2402 | 505 | E2 | 7 | 2416M-FTA | 230 |
| | 340 | 5:1 | 113 - 510 | 5 | IDGM2403 | 505 | E2 | 7 | 2416M-FTA | 230 |
| D Style | | | | | | | | | | |
| 1/20 | 5.4 | 660:1 | 2 - 8 | 75 | IDGM2301 | 660 | E2 | 10 | 2416M-DB | 230 |
| | 18.6 | 130:1 | 6 - 27 | 75 | IDGM2302 | 660 | E2 | 10 | 2416M-DB | 230 |
| E Style | | | | | | | | | | |
| 1/12 | 9.3 | 180:1 | 3 - 14 | 175 | IDGM2512 | 840 | E2 | 15 | 2512M-EB | 230 |
| | 16.8 | 100:1 | 6 - 25 | 125 | IDGM2511 | 840 | E2 | 15 | 2512M-EB | 230 |
| B Style | | | | | | | | | | |
| 1/15 | 28.3 | 60:1 | 10 - 44 | 30 | IDGM2406 | 612 | E2 | 13 | 2512M-BB | 230 |
| | 85 | 20:1 | 28 - 128 | 25 | IDGM2405 | 612 | E2 | 13 | 2512M-BB | 230 |
| | 340 | 5:1 | 113 - 510 | 15 | IDGM2404 | 612 | E2 | 13 | 2520M-BB | 230 |
| G Style | | | | | | | | | | |
| 1/6 | 6 | 280:1 | 2 - 9 | 400 | IDGM2515 | 1036 | E2 | 20 | 2516M-G | 230 |
| | 14 | 120:1 | 5 - 21 | 375 | IDGM2514 | 1036 | E2 | 20 | 2516M-G | 230 |
| | 28 | 60:1 | 9 - 42 | 250 | IDGM2513 | 1036 | E2 | 20 | 2516M-G | 230 |
| K Style | | | | | | | | | | |
| 3/8 | 22 | 75:1 | 7 - 33 | 315 | IDGM2509 | 868 | E2 | 17 | 2528M-K | 230 |
| | 28 | 60:1 | 9 - 42 | 252 | IDGM2508 | 868 | E2 | 17 | 2528M-K | 230 |
| | 41 | 40:1 | 14 - 62 | 228 | IDGM2506 | 868 | E2 | 18 | 2528M-K | 230 |
| | 83 | 20:1 | 28 - 125 | 138 | IDGM2503 | 868 | E2 | 17 | 2528M-K | 230 |
| | 165 | 10:1 | 55 - 248 | 105 | IDGM2501 | 868 | E2 | 17 | 2528M-K | 230 |
| | 330 | 5:1 | 110 - 495 | 68 | IDGM2500 | 868 | E2 | 17 | 2528M-K | 230 |
| HK Style | | | | | | | | | | |
| 3/8 | 22 | 75:1 | 7 - 33 | 315 | IDGHM2509 | 998 | E2 | 19 | 2528M-HK | 230 |
| | 28 | 60:1 | 9 - 42 | 252 | IDGHM2508 | 998 | E2 | 19 | 2528M-HK | 230 |
| | 41 | 40:1 | 14 - 62 | 228 | IDGHM2506 | 998 | E2 | 19 | 2528M-HK | 230 |
| | 83 | 20:1 | 28 - 125 | 138 | IDGHM2503 | 998 | E2 | 19 | 2528M-HK | 230 |
| | 165 | 10:1 | 55 - 248 | 105 | IDGHM2501 | 998 | E2 | 19 | 2528M-HK | 230 |
| | 330 | 5:1 | 110 - 495 | 68 | IDGHM2500 | 998 | E2 | 19 | 2528M-HK | 230 |
| J Style | | | | | | | | | | |
| 1/2 | 28.7 | 60:1 | 10 - 44 | 385 | IDGM3303 | 942 | E2 | 28 | 3324M-JH | 230 |
| | 57.5 | 30:1 | 19 - 86 | 355 | IDGM3302 | 942 | E2 | 28 | 3324M-JH | 230 |
| 3/4 | 172 | 10:1 | 57 - 255 | 230 | IDGM3301 | 961 | E2 | 30 | 3324M-JH | 230 |
| | 345 | 5:1 | 113 - 510 | 125 | IDGM3300 | 961 | E2 | 30 | 3324M-JH | 230 |

(a) Vertical motor below gearhead not recommended. Avoiding those positions where the high speed oil seal is immersed in oil, will provide greater security against high speed input seal wear.

ATTENTION: Additional ratios, voltages, and ratings are available. Application specific modifications are the common, such as custom shaft dimensions, addition of brakes or encoders, specific power cords, and washdown features. Contact your local Baldor representative for assistance.



Parallel Shaft

| Input Motor Hp | Output RPM 60 Hz | Gear Ratio | Stages | Speed Range (CT) | Max. Safe Torque In. Lbs. @ 60 Hz | Catalog Number (a) | List Price | Mult. Sym. | Ap'x Shpg. Wgt. | Motor Type & Gear Style | Voltage @ 60 Hz |
|-------------------|------------------|------------|--------|------------------|-----------------------------------|--------------------|------------|------------|-----------------|-------------------------|-----------------|
| PSSH Style | | | | | | | | | | | |
| 1/30 | 9.6 | 180:1 | 4 | 3 - 15 | 144 | IDGMP24180 | 613 | E2 | 11 | 2412M-PSSH | 230 |
| 1/15 | 18.8 | 90:1 | 4 | 6 - 29 | 144 | IDGMP24090 | 613 | E2 | 13 | 2416M-PSSH | 230 |
| | 27.9 | 60:1 | 3 | 9 - 42 | 130 | IDGMP24060 | 595 | E2 | 11 | 2416M-PSSH | 230 |
| 1/8 | 55 | 30:1 | 3 | 18 - 83 | 125 | IDGMP24030 | 595 | E2 | 14 | 2424M-PSSH | 230 |
| 1/5 | 84.5 | 20:1 | 2 | 28 - 128 | 142 | IDGMP24020 | 561 | E2 | 12 | 2524M-PSSH | 230 |
| 1/4 | 167 | 10:1 | 2 | 56 - 251 | 86 | IDGMP24010 | 561 | E2 | 12 | 2524M-PSSH | 230 |
| | 335 | 5:1 | 2 | 112 - 503 | 44 | IDGMP24005 | 561 | E2 | 12 | 2524M-PSSH | 230 |
| PSM Style | | | | | | | | | | | |
| 1/25 | 9.4 | 180:1 | 4 | 3 - 14 | 184 | IDGMP25181 | 729 | E2 | 16 | 2412M-PSM | 230 |
| 1/15 | 18.6 | 90:1 | 4 | 6 - 29 | 176 | IDGMP25091 | 729 | E2 | 16 | 2416M-PSM | 230 |
| 1/8 | 27.5 | 60:1 | 3 | 9 - 42 | 204 | IDGMP25061 | 698 | E2 | 14 | 2424M-PSM | 230 |
| 1/4 | 55.8 | 30:1 | 3 | 19 - 84 | 230 | IDGMP25031 | 698 | E2 | 18 | 2524M-PSM | 230 |
| | 83.5 | 20:1 | 2 | 28 - 126 | 166 | IDGMP25021 | 698 | E2 | 16 | 2524M-PSM | 230 |
| | 167 | 10:1 | 2 | 56 - 251 | 86 | IDGMP25011 | 667 | E2 | 16 | 2524M-PSM | 230 |
| | 335 | 5:1 | 2 | 112 - 503 | 44 | IDGMP25006 | 667 | E2 | 16 | 2524M-PSM | 230 |
| PSL Style | | | | | | | | | | | |
| 1/12 | 9.6 | 180:1 | 4 | 3 - 15 | 445 | IDGMP25182 | 1059 | E2 | 20 | 2516M-PSL | 230 |
| 1/8 | 18.8 | 90:1 | 4 | 6 - 29 | 360 | IDGMP25092 | 1059 | E2 | 20 | 2516M-PSL | 230 |
| 1/6 | 28 | 60:1 | 3 | 9 - 42 | 325 | IDGMP25063 | 1044 | E2 | 18 | 2516M-PSL | 230 |
| 1/4 | 56 | 30:1 | 3 | 19 - 84 | 247 | IDGMP25033 | 1044 | E2 | 18 | 2524M-PSL | 230 |
| | 84 | 20:1 | 2 | 28 - 126 | 167 | IDGMP25023 | 1025 | E2 | 17 | 2524M-PSL | 230 |
| | 167 | 10:1 | 2 | 56 - 251 | 85 | IDGMP25013 | 1025 | E2 | 17 | 2524M-PSL | 230 |
| | 335 | 5:1 | 2 | 112 - 503 | 44 | IDGMP25008 | 1025 | E2 | 17 | 2524M-PSL | 230 |
| 3/8 | 41 | 60:1 | 3 | 14 - 62 | 500 | IDGMP25062 | 1037 | E2 | 20 | 2528M-PSL | 230 |
| | 55 | 30:1 | 3 | 18 - 83 | 350 | IDGMP2505 | 1037 | E2 | 20 | 2528M-PSL | 230 |
| | 83 | 20:1 | 2 | 28 - 125 | 233 | IDGMP2503 | 1012 | E2 | 18 | 2528M-PSL | 230 |
| | 165 | 10:1 | 2 | 55 - 248 | 116 | IDGMP2501 | 1012 | E2 | 18 | 2528M-PSL | 230 |
| | 330 | 5:1 | 2 | 110 - 495 | 58 | IDGMP2500 | 1012 | E2 | 18 | 2528M-PSL | 230 |
| 1/2 | 43 | 40:1 | 3 | 14 - 65 | 637 | IDGMP33040 | 1037 | E2 | 28 | 3324M-PSLH | 230 |
| | 57 | 30:1 | 3 | 19 - 86 | 482 | IDGMP33030 | 1037 | E2 | 28 | 3324M-PSLH | 230 |
| | 86 | 20:1 | 2 | 29 - 129 | 326 | IDGMP33020 | 1012 | E2 | 25 | 3324M-PSLH | 230 |
| | 115 | 15:1 | 2 | 38 - 173 | 245 | IDGMP33015 | 1012 | E2 | 25 | 3324M-PSLH | 230 |
| | 172 | 10:1 | 2 | 57 - 258 | 164 | IDGMP33010 | 1012 | E2 | 25 | 3324M-PSLH | 230 |
| | 345 | 5:1 | 2 | 115 - 518 | 82 | IDGMP33005 | 1012 | E2 | 25 | 3324M-PSLH | 230 |

(a) Vertical motor below gearhead not recommended. Avoiding those positions where the high speed oil seal is immersed in oil, will provide greater security against high speed input seal wear.



Gearmotor Accessories

“L” Type Mounting Brackets for Parallel Shaft Gearmotors

Description:

- Mounting brackets for PSSH, PSL, and PSLH gearmotors. Securely mounts to gear face in 90 degree locations for floor, wall or ceiling mount. LB74 bracket is not recommended for units weighing over 20 lbs. For units weighing more than 20 lbs. use LB75.

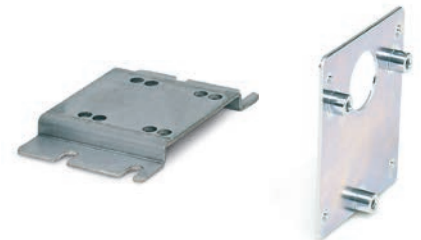


| Catalog Number | Gearhead Style | List Price | Mult. Sym. | Color | Ap'x. Shpg. Wgt. |
|----------------|----------------|------------|------------|-------------|------------------|
| LB73 | PSSH | 49 | A8 | Black | 2 |
| LB74 | PSL | 69 | A8 | Black | 2 |
| LB75 | PSL/PSLH | 96 | A8 | Black | 7 |
| LB73GR | PSSH | 49 | A8 | Baldor Grey | 2 |
| LB74GR | PSL | 69 | A8 | Baldor Grey | 2 |
| LB75GR | PSL/PSLH | 96 | A8 | Baldor Grey | 7 |

PSM Parallel Shaft Mounting Adapters

Description:

- **B92:** Formed steel mounting base that bolts to the machined surface on bottom of the PSM gear box. Provides secure foot mounting of gearmotor and drop-in interchangeability with other major manufacturers.
- **B93:** Three point face mounting adapter. Provides interchangeability with industry standard mounting dimensions.



| Catalog Number | Description | Ap'x. Shpg. Wgt. |
|----------------|--------------------|------------------|
| B92 | Foot Mount | 1 |
| B93 | 3 Point Face Mount | 1 |

Feedback Devices

| Item | Description |
|-------------|--|
| Optical | U.S. Digital (E2) - 500 or 1000 PPR (pulse per revolution) |
| | Renco (R35i) - 500 or 1000 PPR |
| | BEI (H20) - 200, 500, or 1000 PPR |
| Hall Effect | 1-60 PPR (single pulse) |
| | 1-60 PPR (With Quadrature) |



AC Variable Speed Drives

| Drive Type | Hp Range | Power Supply | Voltage Range | Literature |
|------------|--------------|--------------|--------------------------|--------------------|
| ACS55 | 1/4 - 3.0 Hp | 1 Phase | 110-120 and 200-240 VAC | 501 or CA769 |
| ACS150 | 1/2 - 3.0 Hp | 1 Phase | 200-240 VAC | |
| | 1/2 - 5.0 Hp | 3 Phase | 200-240 and 380-480V VAC | |
| Series 5 | 1/2 - 2.0 Hp | 1 Phase | 110-120 and 200-240 VAC | |
| | 1.0 - 5.0 Hp | 3 Phase | 200-240 and 380-480V VAC | |



BALDOR

A MEMBER OF THE ABB GROUP

Baldor Electric Company

P.O. Box 2400 • Fort Smith, AR 72902-2400 U.S.A.

Phone (479) 646-4711 • Fax (479) 648-5792

www.baldor.com